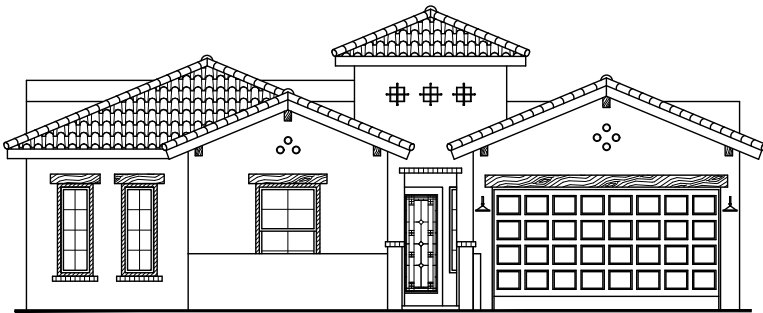




CULLERS HOMES

For more information
915.200.5530

SAN PAULO 2177



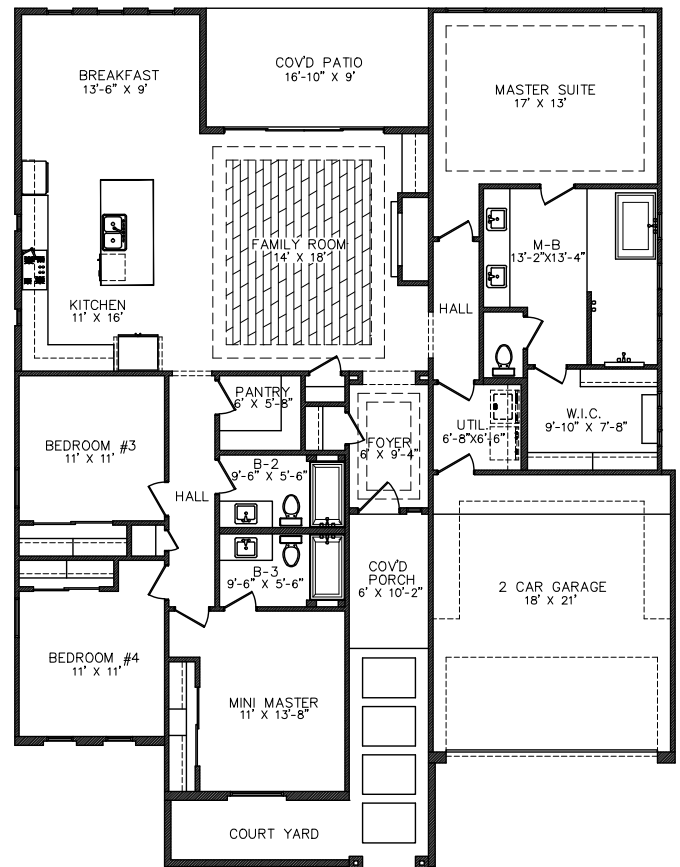
FRONT ELEVATION

- LIVING: 2177 SF
- 2 CAR GARAGE
- FOYER
- FAMILY ROOM
- DINING ROOM
- KITCHEN
- ENTERTAINMENT CENTER
- UTIL. ROOM
- 4 BEDROOM INCLUDING MINI MASTER
- 3 BATH
- COURTYARD

DIMENSIONS

W: 50'-0"

D: 60'-0"



FLOOR PLAN



WWW.CULLERSHOMES.COM

IN CONTINUING EFFORTS TO IMPROVE OUR HOMES CULLERS HOMES RESERVES THE RIGHT TO MAKE CHANGES OR MODIFICATIONS TO THE FLOOR PLAN. PLEASE REFERENCE INDIVIDUAL FLOOR PLANS TO BETTER UNDESTAND WHAT FEATURES ARE INCLUDED IN THE HOME.