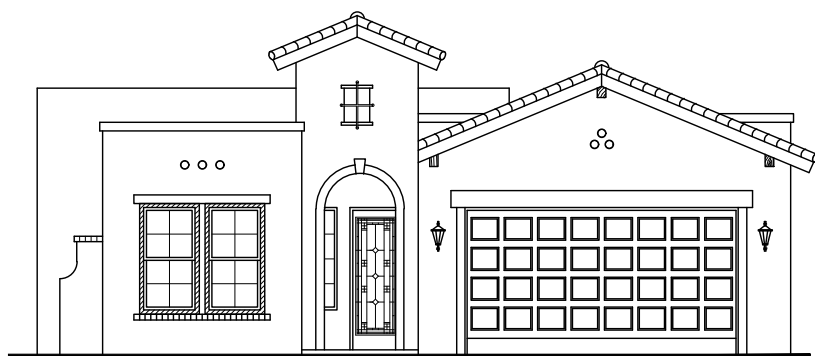




# CULLERS HOMES

For more information  
915.200.5530

## DESERT POPPY 2059

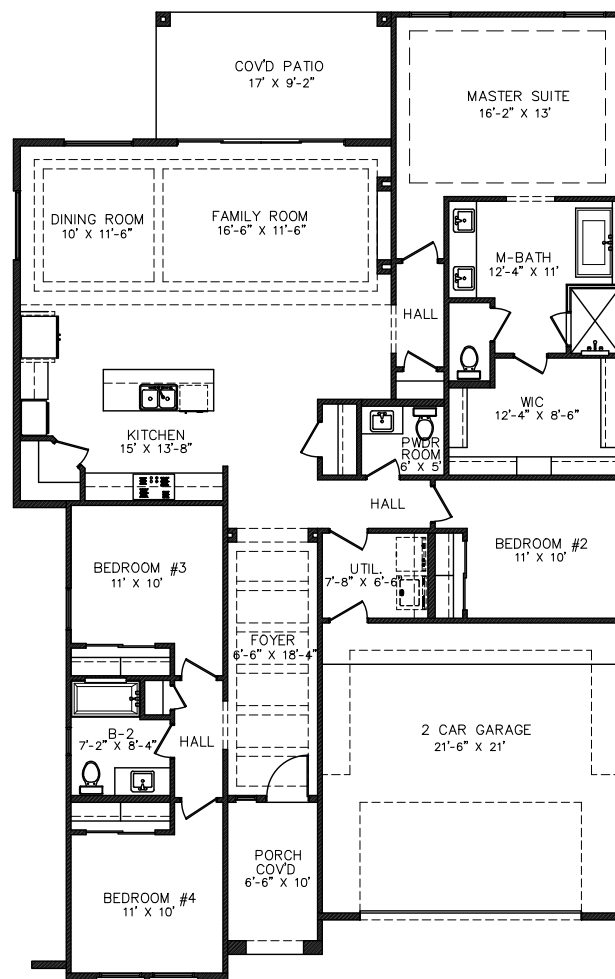


FRONT ELEVATION

- LIVING: 2059 SF
- 2 CAR GARAGE
- FOYER
- FAMILY ROOM
- DINING ROOM
- KITCHEN
- UTIL. ROOM
- 4 BEDROOM
- 2 BATH
- POWDER ROOM

### DIMENSIONS

W: 44'-2"  
D: 70'-2"



FLOOR PLAN



[WWW.CULLERSHOMES.COM](http://WWW.CULLERSHOMES.COM)

IN CONTINUING EFFORTS TO IMPROVE OUR HOMES CULLERS HOMES RESERVES THE RIGHT TO MAKE CHANGES OR MODIFICATIONS TO THE FLOOR PLAN. PLEASE REFERENCE INDIVIDUAL FLOOR PLANS TO BETTER UNDESTAND WHAT FEATURES ARE INCLUDED IN THE HOME.