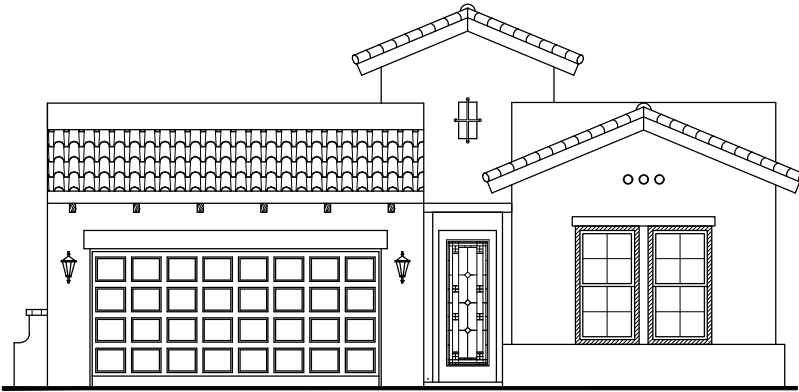




CULLERS HOMES

For more information
915.200.5530

COYOACÁN 1941



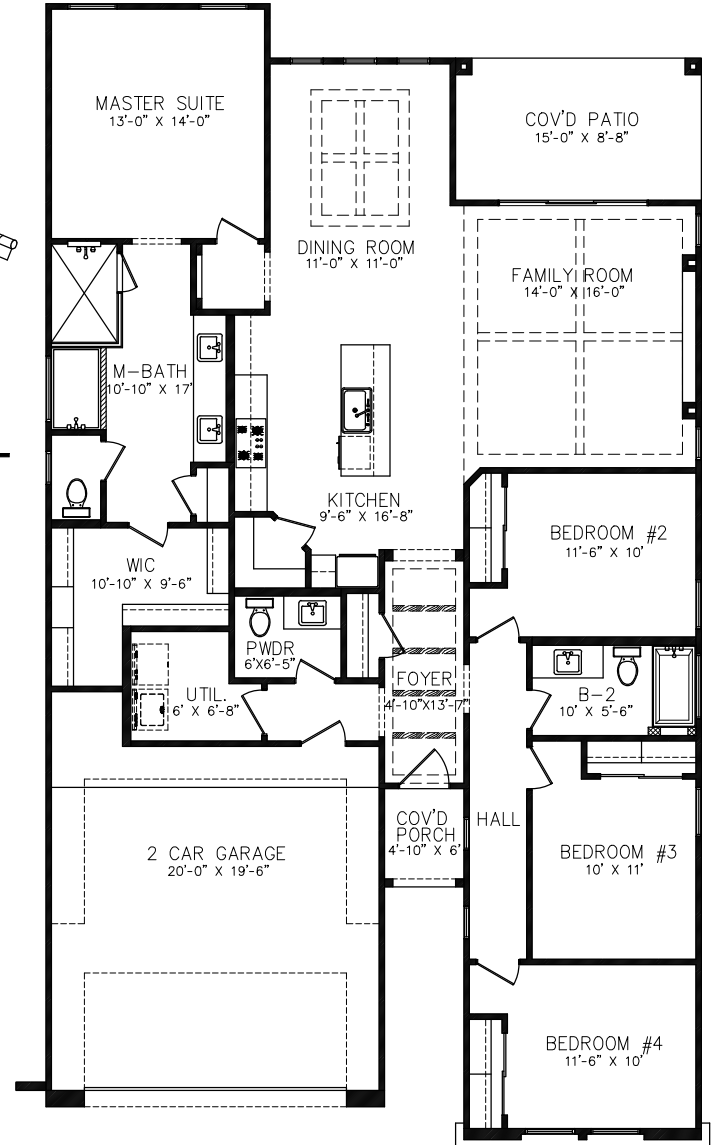
FRONT ELEVATION

- LIVING: 1941 SF
- 2 CAR GARAGE
- FOYER
- FAMILY ROOM
- DINING ROOM
- CHEF'S KITCHEN
- UTIL. ROOM
- 4 BEDROOM
- 2 BATH
- POWDER ROOM

DIMENSIONS

W: 40'-0"

D: 59'-6"



FLOOR PLAN



WWW.CULLERSHOMES.COM

IN CONTINUING EFFORTS TO IMPROVE OUR HOMES CULLERS HOMES RESERVES THE RIGHT TO MAKE CHANGES OR MODIFICATIONS TO THE FLOOR PLAN. PLEASE REFERENCE INDIVIDUAL FLOOR PLANS TO BETTER UNDESTAND WHAT FEATURES ARE INCLUDED IN THE HOME.