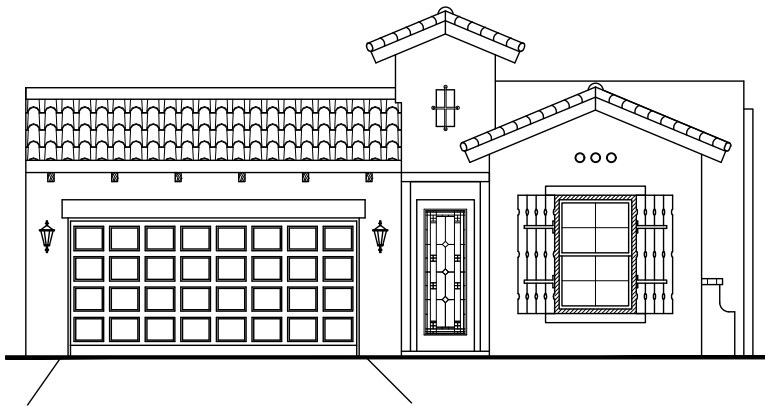




CULLERS HOMES

For more information
915.200.5530

COYOACÁN 1579

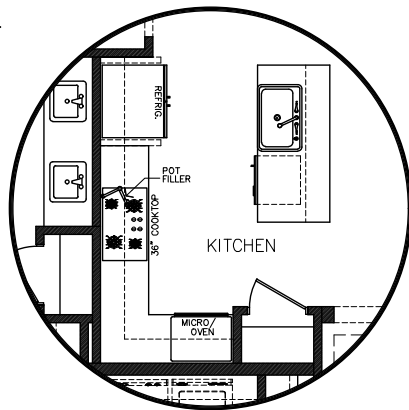


FRONT ELEVATION

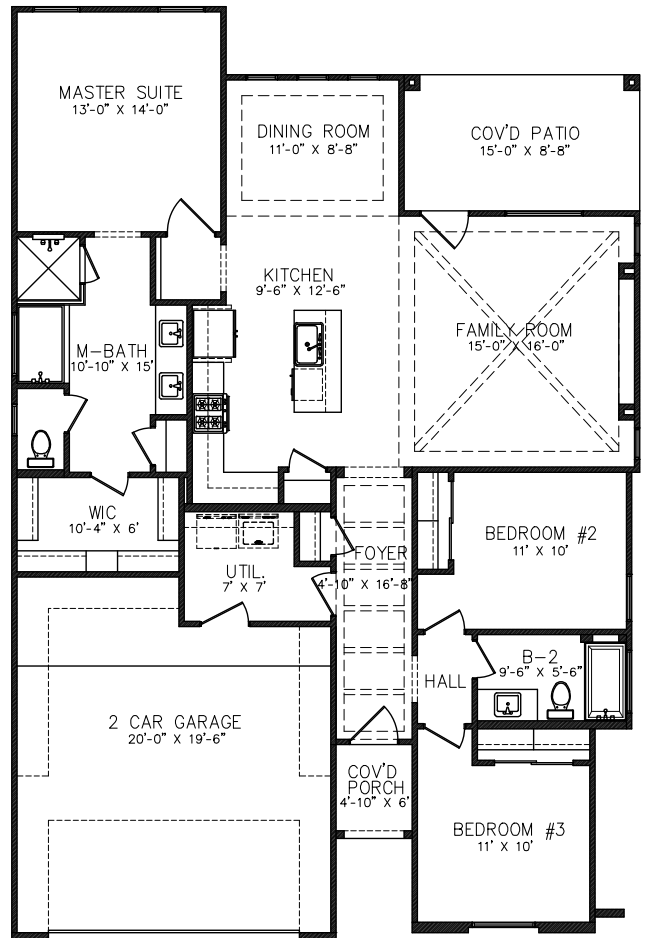
- LIVING: 1579 SF
- 2 CAR GARAGE
- FOYER
- KITCHEN
- UTIL. ROOM
- 3 BEDROOM
- 2 BATH
- FAMILY ROOM
- DINING ROOM

DIMENSIONS

W: 40'-0"
D: 59'-6"



CHEF'S
KITCHEN OPTION



FLOOR PLAN



WWW.CULLERSHOMES.COM

IN CONTINUING EFFORTS TO IMPROVE OUR HOMES CULLERS HOMES RESERVES THE RIGHT TO MAKE CHANGES OR MODIFICATIONS TO THE FLOOR PLAN. PLEASE REFERENCE INDIVIDUAL FLOOR PLANS TO BETTER UNDESTAND WHAT FEATURES ARE INCLUDED IN THE HOME.