



CULLERS HOMES

For more information
915.200.5530

DESERT STAR-A 2086



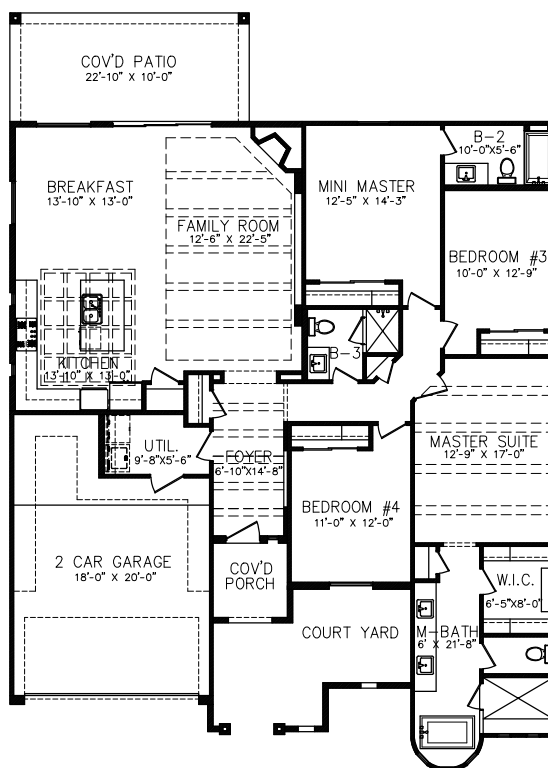
FRONT ELEVATION

- LIVING: 2086 SF
- 2 CAR GARAGE
- ENTRY
- KITCHEN
- UTIL. ROOM
- COURTYARD
- 4 BEDROOM INCLUDING MINI MASTER
- 3 BATH
- FAMILY ROOM
- DINING ROOM

DIMENSIONS

W: 50'-3"

D: 59'-9"



FLOOR PLAN



WWW.CULLERSHOMES.COM

IN CONTINUING EFFORTS TO IMPROVE OUR HOMES CULLERS HOMES RESERVES THE RIGHT TO MAKE CHANGES OR MODIFICATIONS TO THE FLOOR PLAN. PLEASE REFERENCE INDIVIDUAL FLOOR PLANS TO BETTER UNDESTAND WHAT FEATURES ARE INCLUDED IN THE HOME.