



FOR INFORMATION CALL:
915-842-1333

CULLERS HOMES

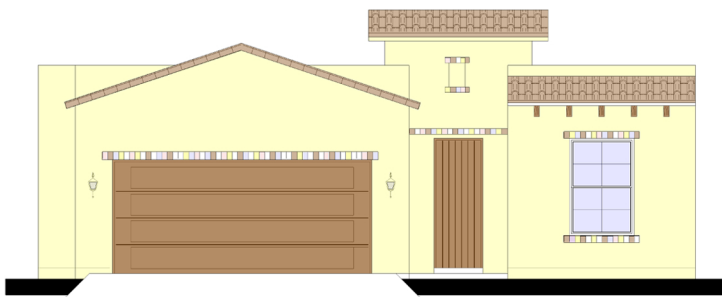
7170 WESTWIND DR. SUITE 101 EL PASO, TX 79912

"THE PRICKLY PEAR II PLAN"

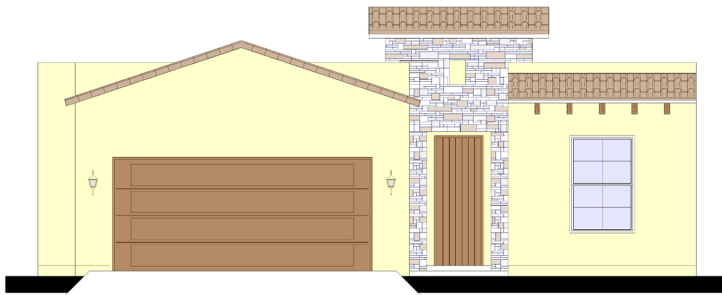
DIMENSIONS

W: 40'-6 1/2"

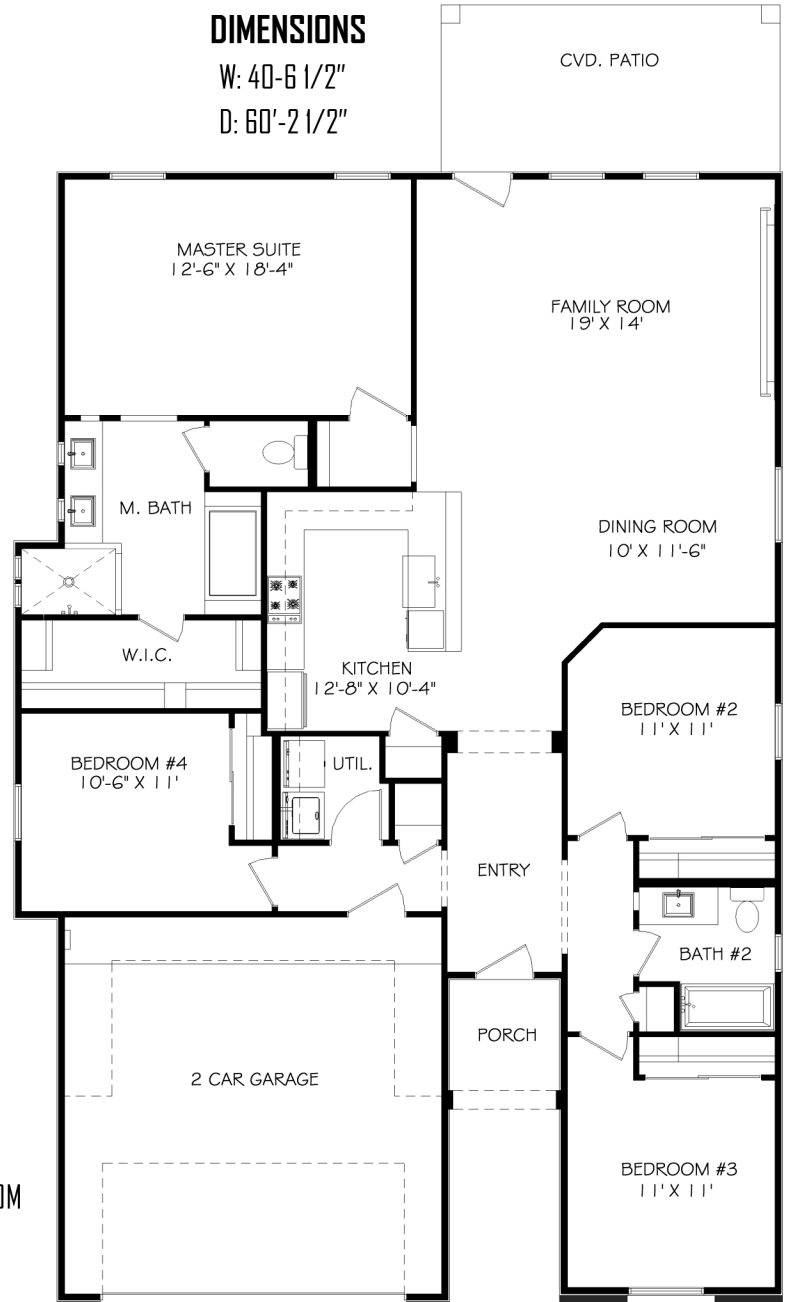
D: 60'-2 1/2"



Elevation A



Elevation B



AREAS

- LIVING: 1828 SF
- GARAGE: 425SF
- TOTAL: 2453 SF
- 4 BEDROOM
- 2 BATH



WWW.CULLERSHOMES.COM

PLANS SUBJECT TO CHANGE WITHOUT NOTICE