



FOR INFORMATION CALL:  
915-842-1333

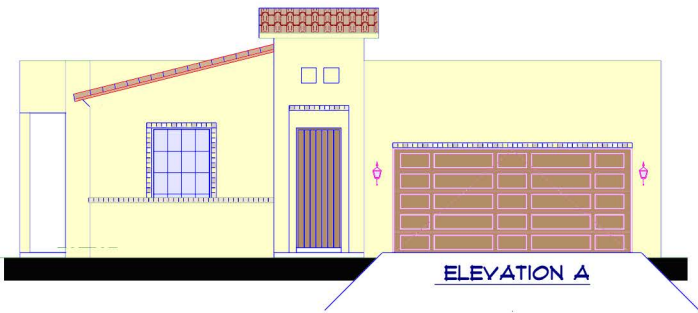
# CULLERS HOMES

7170 WESTWIND DR. SUITE 101 EL PASO, TX 79912

## "THE MOJAVE PLAN"

### DIMENSIONS

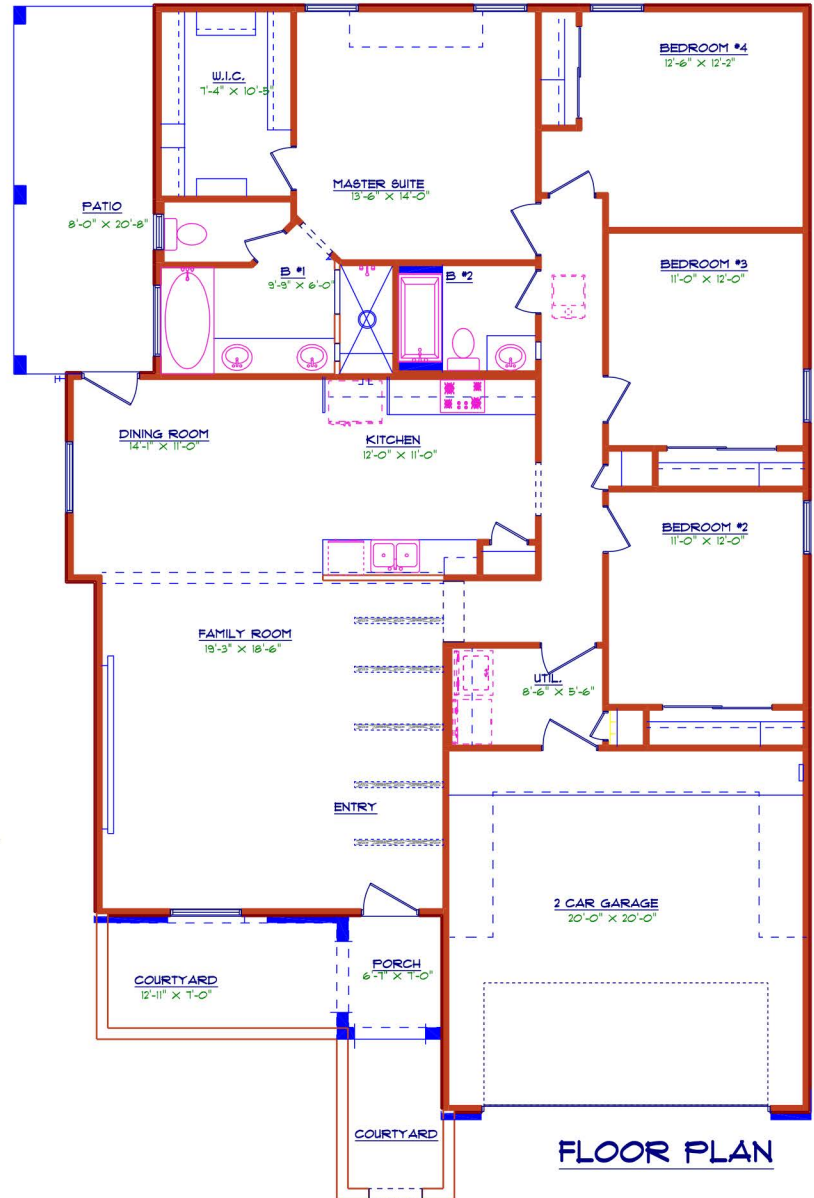
W: 41'-9"  
D: 62'-2 1/2"



ELEVATION A



ELEVATION B



FLOOR PLAN

### AREAS

- LIVING: 1828 SF
- GARAGE: 425 SF
- KITCHEN
- FAMILY ROOM
- 2 CAR GARAGE
- 4 BEDROOM
- 2 BATH
- DINING ROOM
- ENTRY FOYER
- UTIL. ROOM



[WWW.CULLERSHOMES.COM](http://WWW.CULLERSHOMES.COM)

PLANS SUBJECT TO CHANGE WITHOUT NOTICE