

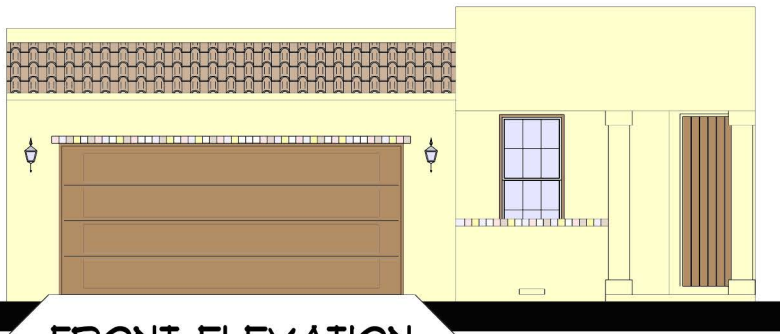


FOR INFORMATION CALL:  
915-842-1333

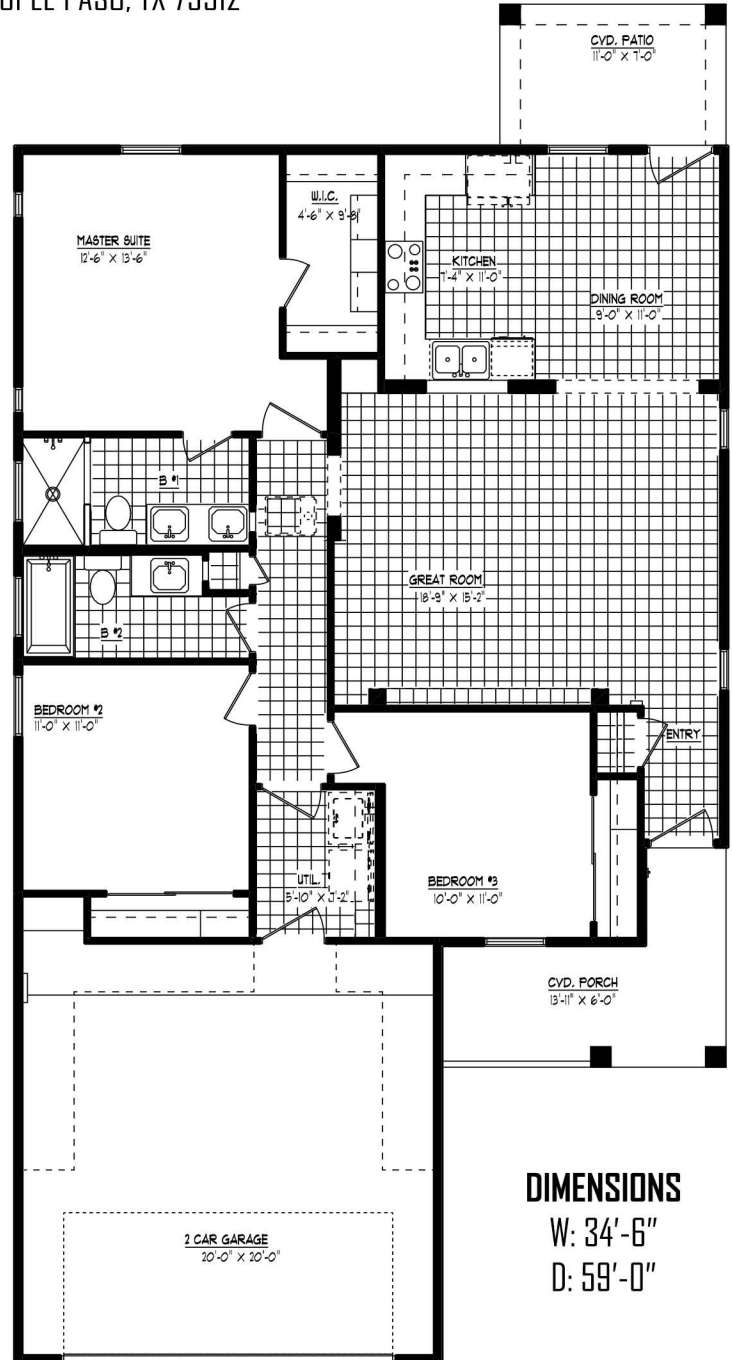
# CULLERS HOMES

7170 WESTWIND DR. SUITE 101 EL PASO, TX 79912

## "THE DESERT PEACH PLAN"



FRONT ELEVATION



### AREAS

-LIVING: 1323 SF  
-GARAGE: 433 SF  
-TOTAL: 1756 SF

-3 BEDROOM  
-2 BATH

### DIMENSIONS

W: 34'-6"  
D: 59'-0"



[WWW.CULLERSHOMES.COM](http://WWW.CULLERSHOMES.COM)

PLANS SUBJECT TO CHANGE WITHOUT NOTICE